

China / Scotland 中国 / 苏格兰



ANSWERS



Page 3



黑龙江

Page 4

Cairngorms

Page 5



2.5m

Page 6

The white tailed sea eagle has white feathers only on its tail. The feathers around its head are pale and sometimes look white.

The Steller's sea eagle has white feathers on its shoulders, legs and tail. The Steller's sea eagle is the largest eagle in the world.



Page 7

The Chinese cobra only spreads open its hood when it feels threatened.

Page 8

The adder's venom is not very dangerous. The bite can be painful but is only dangerous to the very young, ill or old people.

Page 9

The giant salamander has very poor eyesight.

Page 10

This is the female.



This great crested newt does not have a jagged crest along its back.

This is the male.



This great crested newt has a jagged crest along its back and a smooth crest above and below the tail.



China has:

desert

grassland

mountain

mixed forest

rainforest

river

China also has lakes and many more rivers. Only the two largest rivers are marked on the map.

Scotland has:

grassland

mountain

mixed forest

loch

Scotland also has rivers and many more lochs. Only the two largest lochs are marked on the map.

China / Scotland game ANSWERS

For animals and items that are Chinese, the Mandarin name is given. For animals and items that are Scottish, the Gaelic name is given. There is also Gaelic/Mandarin version of the gameboard and cards available to download.

Chinese Animals

Amur tiger 东北虎 dōng běi hǔ

The Amur tiger is found in the north east of China near the Amur river. It is the largest of the tigers.



giant panda 大熊猫 dà xióng māo

The giant panda is native to China. Today it can only be found in Sichuan, Gansu and Shaanxi.



Scottish Animals

wildcat (in Scotland) cat-fiadhaich na h-Alba

The wildcat is one of Scotland's most endangered animals. The wildcat in Scotland is often called the Highland tiger.



Highland cow bò Gàidhealach

The Highland cow is a Scottish breed of cattle. They have long horns and long, wavy, woolly coats.

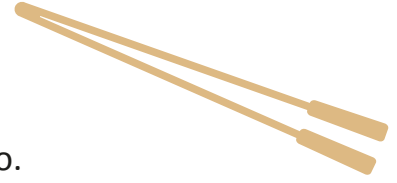


Chinese Inventions

chopsticks

筷子 kuài zi

Chopsticks originated in ancient China possibly 3,000 years ago.



fork

叉子 chā zi

Bone forks have been found in China dating from 4,000 years ago. They pre-date chopsticks.



fork

compass

指南针 zhǐ nán zhēn

The first magnetic compass was invented in China around the 4th century BC. They were made using lodestone, a special form of the mineral magnetite. Since it is magnetic, it aligns itself with the Earth's magnetic field.



compass

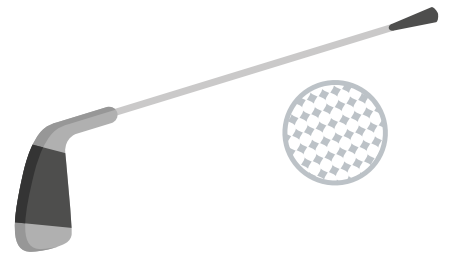
Scottish and Chinese Invention

golf

goilf

高尔夫 gāo ěr fū

The modern game of golf originated in Scotland in the 15th century but there is some dispute over the ancient origins of the game which could have come from China.



Scottish Invention

telephone

fòn

Alexander Graham Bell was the first person to be awarded a patent for the telephone in 1876.

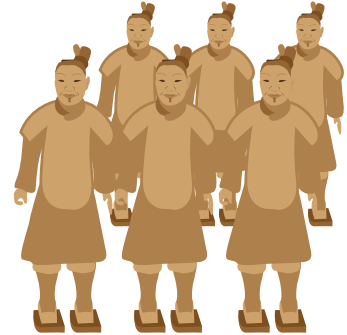


China Artefacts

Terracota Army

兵马俑 bīng mǎ yǒng

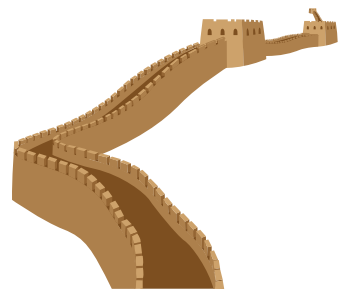
The Terracota Army is a collection of life-sized sculptures guarding the tomb of the first Emperor of China. The figures include warriors, chariots and horses.



Great Wall of China

长城 cháng chéng

The Great Wall is approximately 8851km long. It was started in about 200 BC and added to over the centuries. It runs from Jiāyùguān 嘉峪关 in Gansu province to Shānhǎiguān 山海关 in Hebei province.



Scotland Artefacts

Lewis chessmen

fear-feòirne Leòdhas

The Lewis chessmen are 12th century chess pieces carved from walrus ivory. They were discovered in 1831 on the Isle of Lewis.



sgian-dubh

sgian-dubh

The sgian-dubh, pronounced skee-en-doo is a small, single edged knife. It is tucked into the socks when worn with the traditional kilt.



China is Famous For...

dragon 龙 lóng

The Chinese dragon is a legendary animal. The dragon is a symbol of power, strength and good luck.



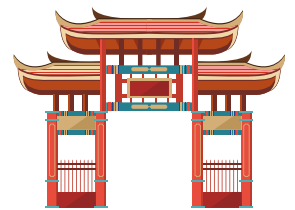
lantern 灯笼 dēng lóng

The first Chinese lanterns are from the Han Dynasty (25-220 AD). The original use of the decorative lantern shade was to prevent the light going out in the wind.



temple 庙 miào

Chinese temples are found throughout China. They were built and used as places of worship. The temples today are also places to remember and worship ancestors or great men in history.



Scotland is Famous For...

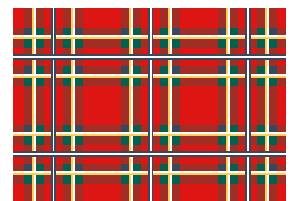
Loch Ness monster uilebheist Loch Nis

The Loch Ness monster is a legendary animal which is said to live in Loch Ness.



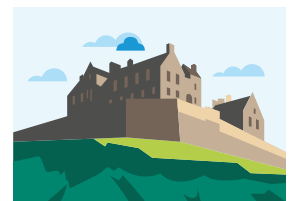
tartan breacan

The earliest tartan known in Scotland dates from the 3rd century. Although tartan is now associated with Scotland, tartan did not come from Scotland. Similar forms of chequered cloth possibly originated in Ireland.



Edinburgh castle caisteal Dhùn Èideann

Edinburgh's castle rock is an extinct volcano. It has been a stronghold since the Iron Age. There has been a castle on the rock since the 12th century.



Thistle cluaran

The thistle became the emblem of Scotland in the 13th century.

