

石头

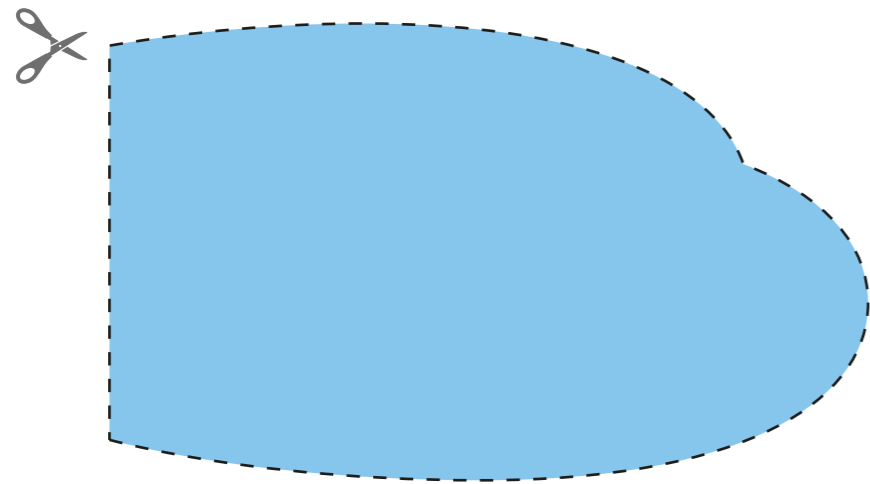
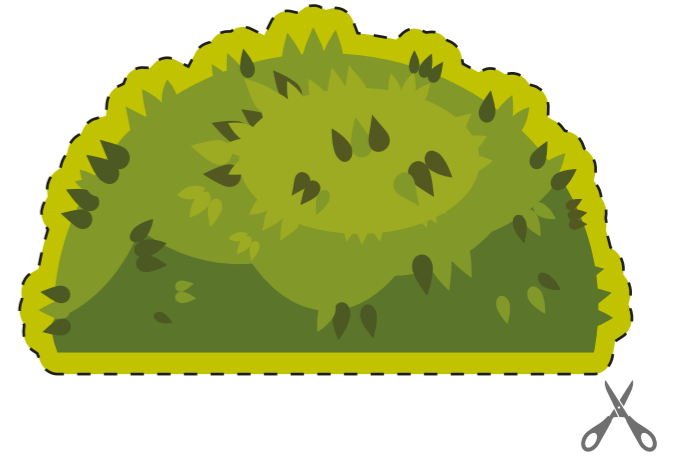
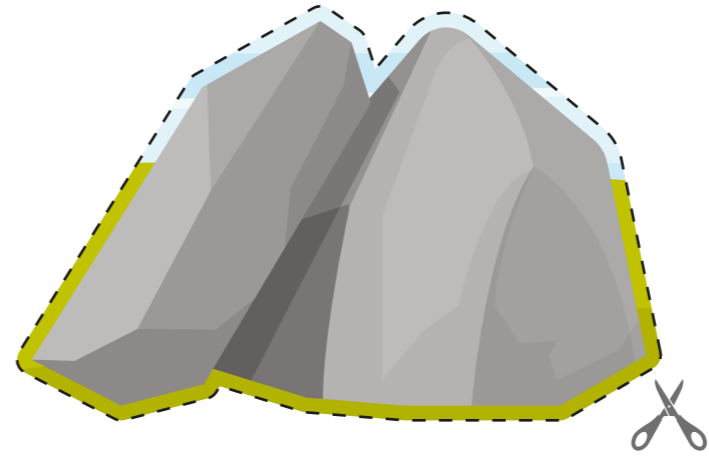
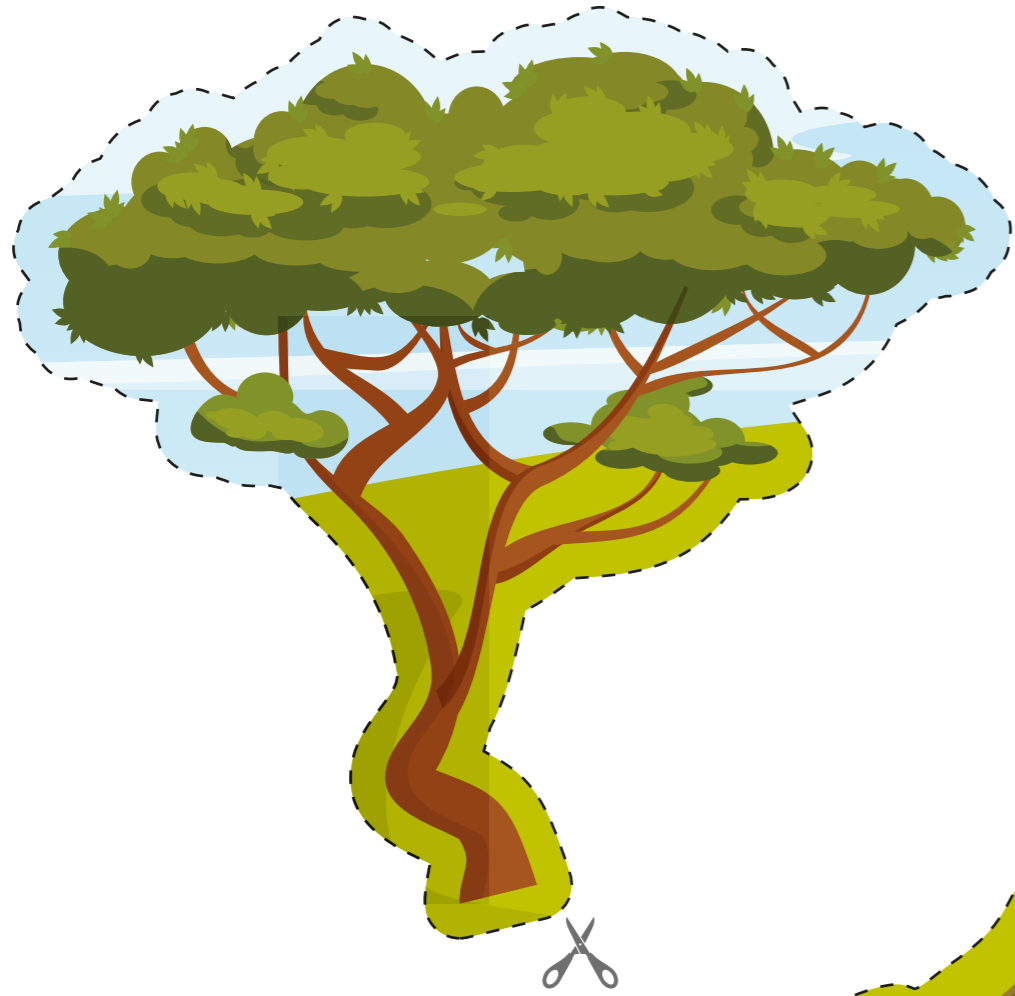
树

矮树丛

洞穴

竹子

池塘



Clue Card

Chinese characters contain a radical. This is a character which provides a clue to the meaning of the word. Look for the following radicals in the characters on the enclosure background.

radicals

木	wood
氵	water
穴	cave
竹	bamboo
石	stone

Chinese words are usually made up of two or three characters. The characters often describe the meaning.

characters

矮	short
树	tree
丛	cluster

Work out the meaning of the words on the panda enclosure background and then place each item in its correct position. Find out how to say the words in Mandarin.

