



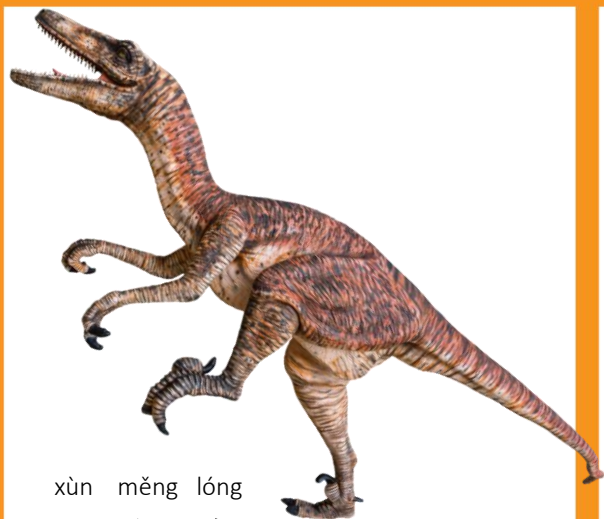
jiàn lóng
剑龙



yì chǐ lóng
异齿龙



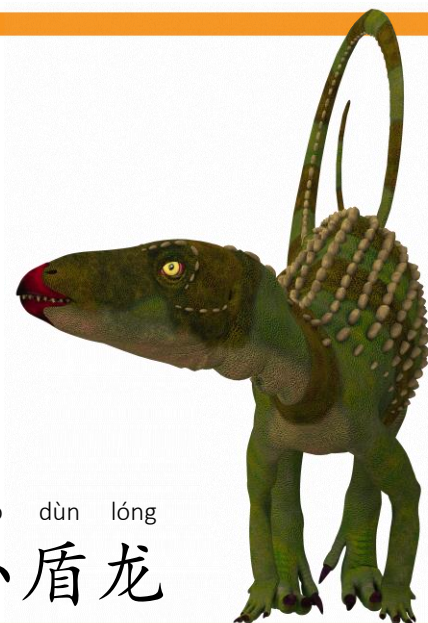
bà wáng lóng
霸王龙



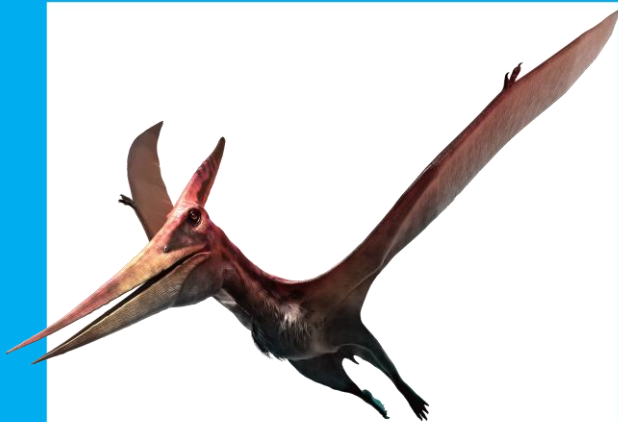
xùn měng lóng
迅猛龙



xū gǔ lóng
虚骨龙



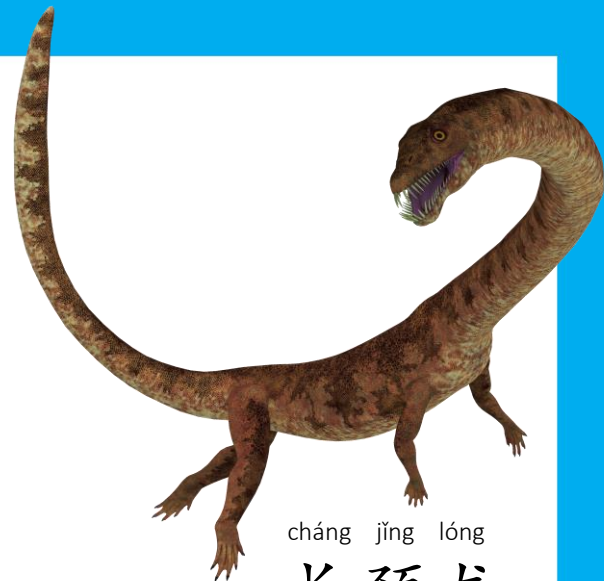
xiǎo dùn lóng
小盾龙



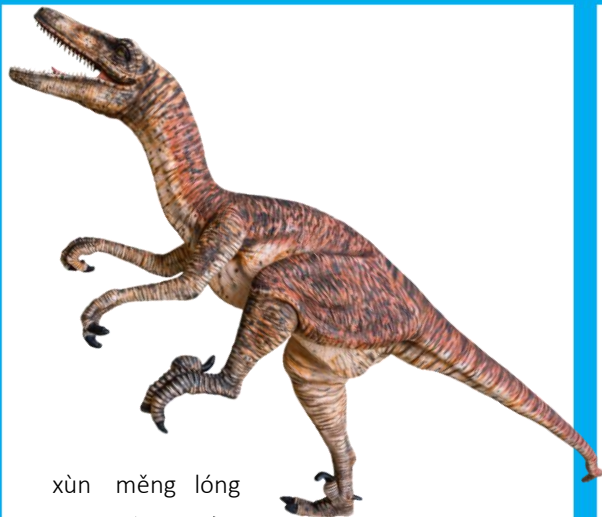
yì lóng
翼龙



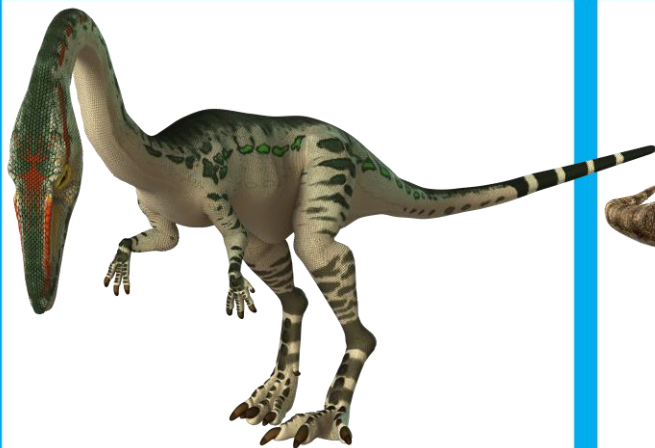
jiàn lóng
剑龙



cháng jǐng lóng
长颈龙



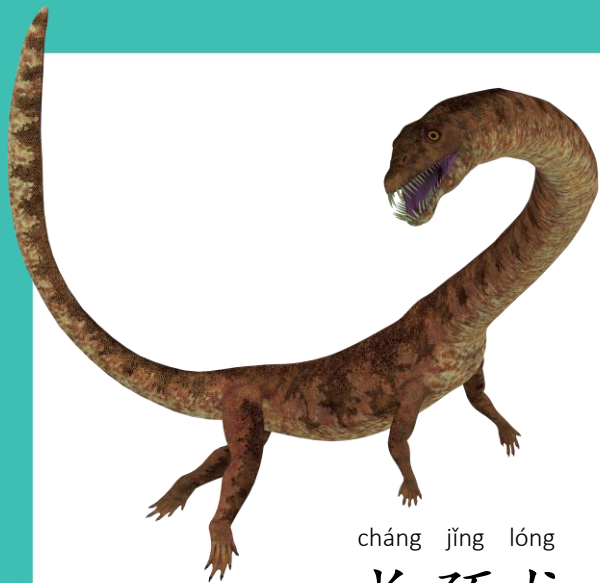
xùn měng lóng
迅猛龙



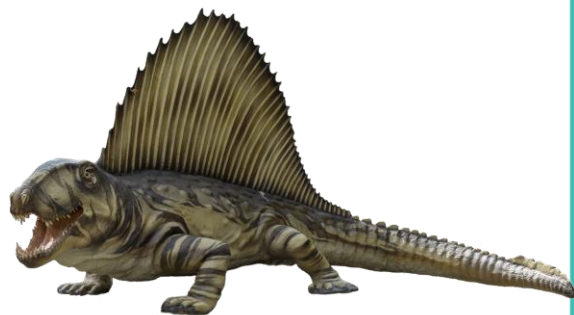
xū gǔ lóng
虚骨龙



bà wáng lóng
霸王龙



cháng jǐng lóng
长颈龙



yì chǐ lóng
异齿龙



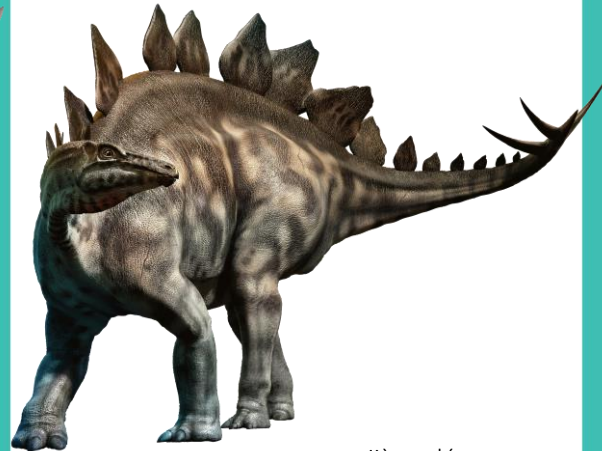
dì zhèn lóng
地震龙



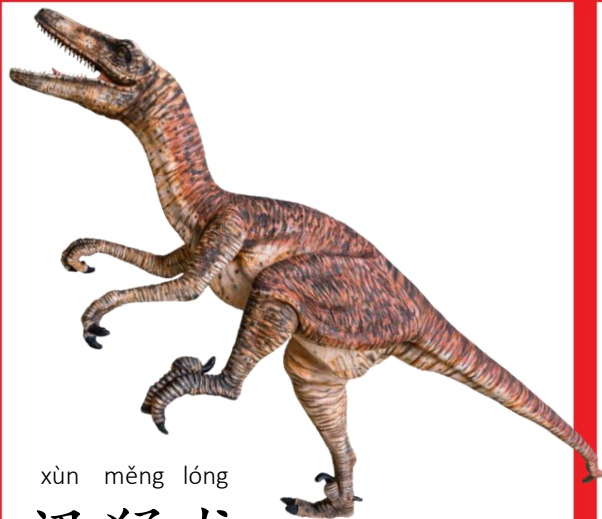
bà wáng lóng
霸王龙



yì lóng
翼龙



jiàn lóng
剑龙



xùn měng lóng
迅猛龙



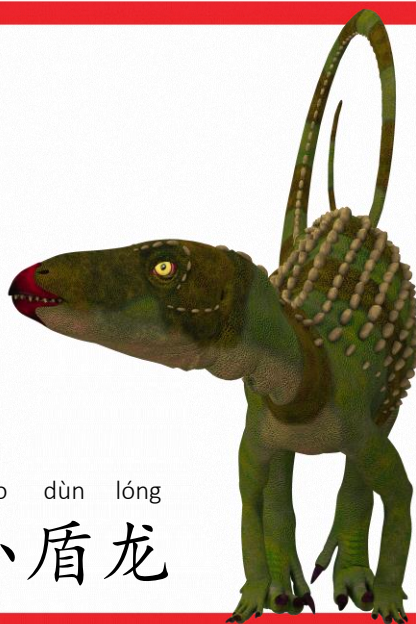
yì chǐ lóng
异齿龙



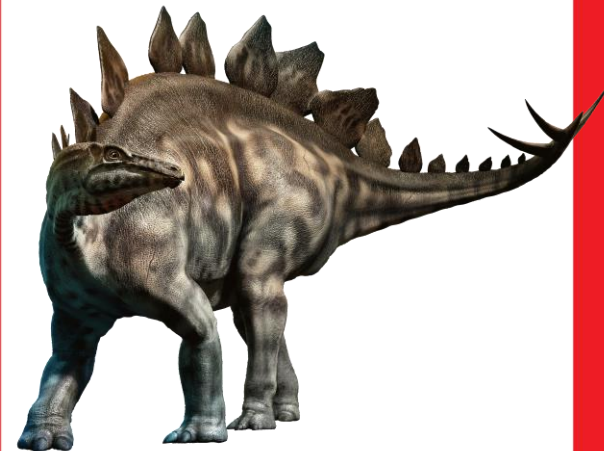
bà wáng lóng
霸王龙



dì zhèn lóng
地震龙



xiǎo dùn lóng
小盾龙



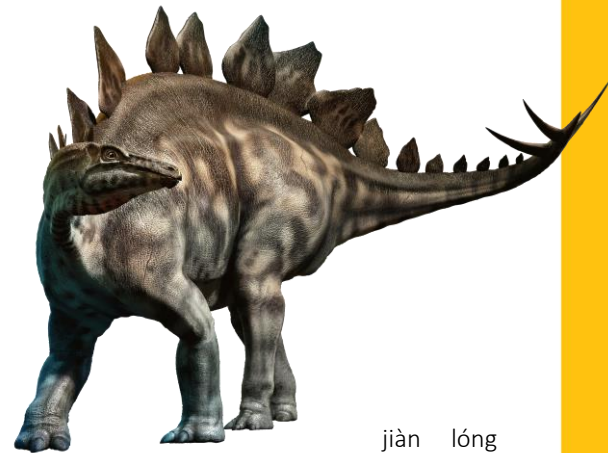
jiàn lóng
剑龙



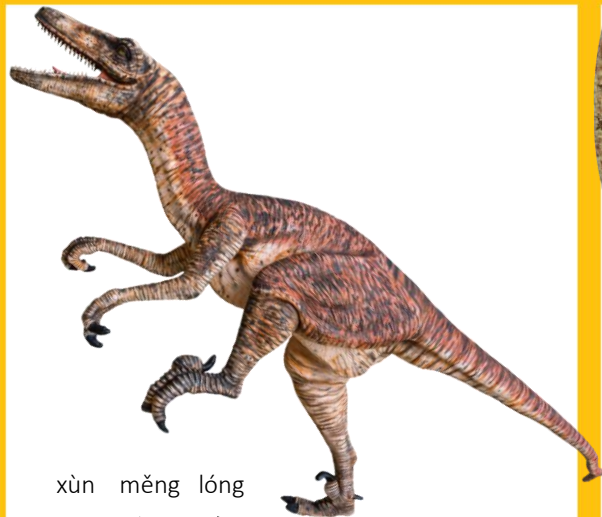
dì zhèn lóng
地震龙



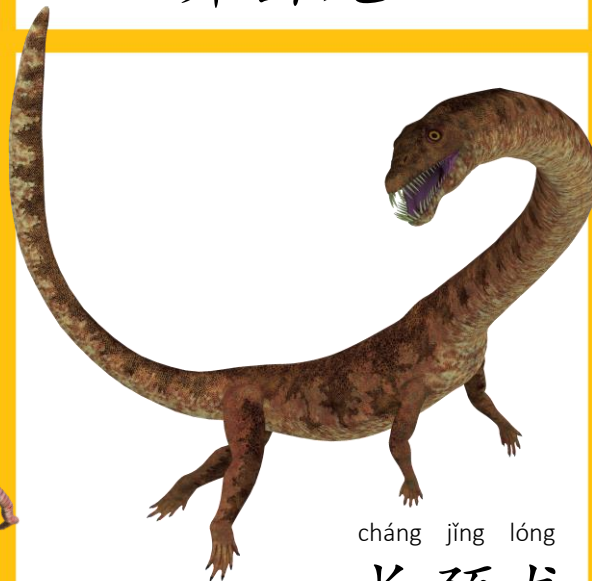
yì chǐ lóng
异齿龙



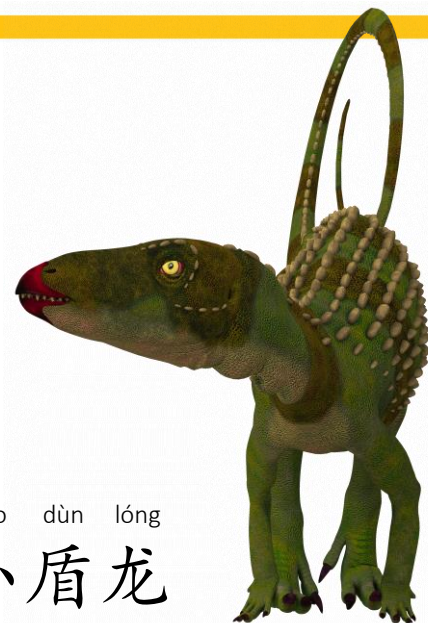
jiàn lóng
剑龙



xùn měng lóng
迅猛龙



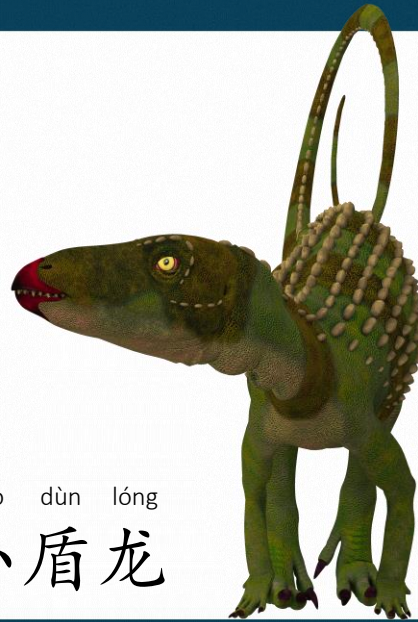
cháng jǐng lóng
长颈龙



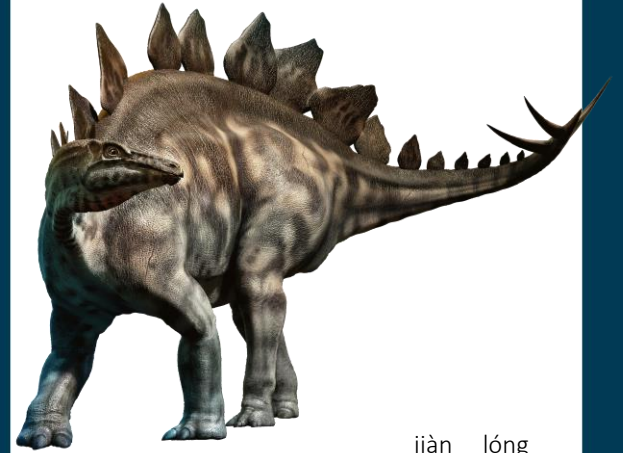
xiǎo dùn lóng
小盾龙



dì zhèn lóng
地震龙



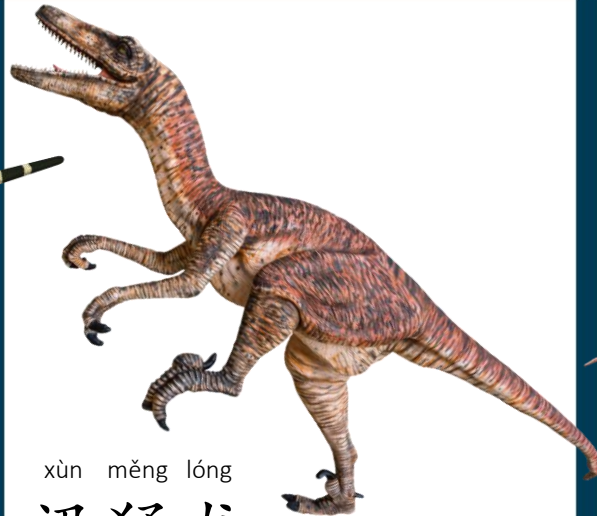
xiǎo dùn lóng
小盾龙



jiàn lóng
剑龙



xū gǔ lóng
虚骨龙



xùn měng lóng
迅猛龙



yì lóng
翼龙