

# Panda Workbook

2

# 熊猫练习册

二



大熊猫

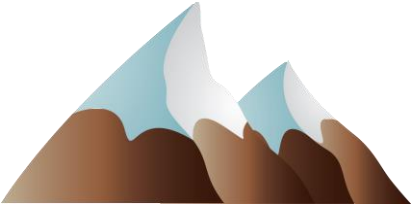


Beyond the Panda  
熊猫后续



Look at the map on pages 2 and 3 of the Panda Folder.

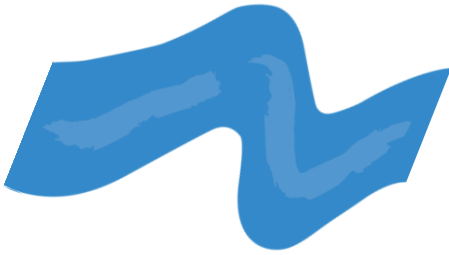
Name the different habitats pictured on the map.



-----



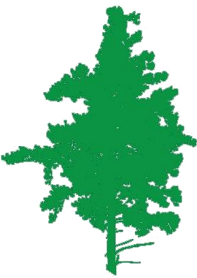
-----



-----



-----



-----



-----

Now look even closer at the same map.

There are a group of small white areas with bamboo in them. This is where the giant panda lives. These white areas lie mainly across two types of habitats.



Name the two habitats.

\_\_\_\_\_

\_\_\_\_\_

Now look at the map on pages 3 and 4.

This map shows a large white area. This is where the giant panda used to live.

Which one of the following do you think has been the main threat to giant pandas?

pollution

habitat loss

overhunting

Now look at the title on both maps.

China is written in English and in Chinese characters.

The Chinese characters are

zhōng guó

中国

The literal translation is middle country.

The Chinese characters for UK mean brave country and are

yīng guó

英国

Which character means country?

中 英 国

Which character means middle?

中 英 国

Look at pages 6 and 7.

Work out the meaning of these characters:

shān

山

-----

shā

Clue – what is a desert covered in?

沙

-----

hé

河

-----

cǎo

草

-----

lín

林

-----

yǔ

雨

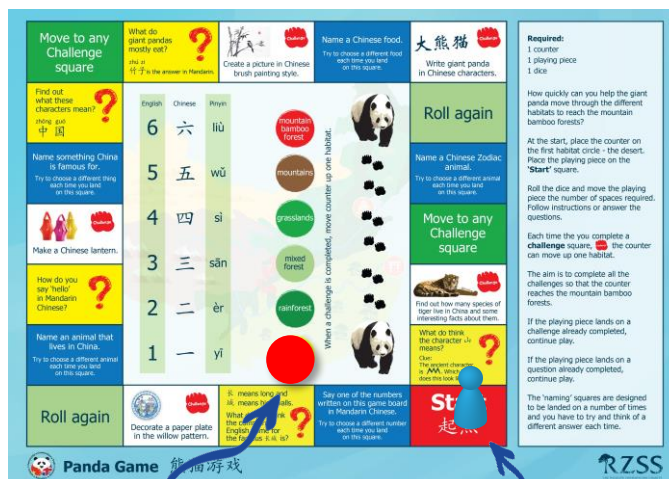
-----

Have fun playing the panda game on pages 8 and 9. You will also need a counter, a playing piece and a dice.



When you start the game, the panda is in the desert! Place a counter on the desert circle on the game board.

When you complete a challenge within the game, your counter can move up to the next habitat circle. When you complete all the challenges, you've helped the panda reach the mountain bamboo forests.



Counter starts on desert

Playing piece on 'Start' square

Challenge squares are marked  Some include art and craft activities.

Within the game you will also land on some question and naming squares.

Rules of the game are written at the side of the game board.

Look at the bamboo diagram on page 10.

Draw arrows from the pictures of the different parts of the bamboo plant to their correct name.



node  
jīng jié  
茎节



rhizome  
gēn zhuàng jīng  
根状茎



stem  
jīng gàn  
茎干



root  
gēn  
根



an underground stem

leaf  
yè  
叶



shoot  
zhú sǔn  
竹笋

Look closely at the two skeletons of the hands on page 11.

One is a human hand and one is a giant panda.

Count the fingers on each hand. Try to count them in Mandarin.

Which is the giant panda hand?

skeleton A      or      skeleton B

Look closely at the two skulls on page 11.

One is a black bear and one is a giant panda.

Look closely at the shape and the teeth on the skulls.

Back teeth that are flatter will be better for chewing bamboo.

Back teeth that are sharp will be better for slicing meat.

Which is the giant panda skull?

skull A      or      skull B



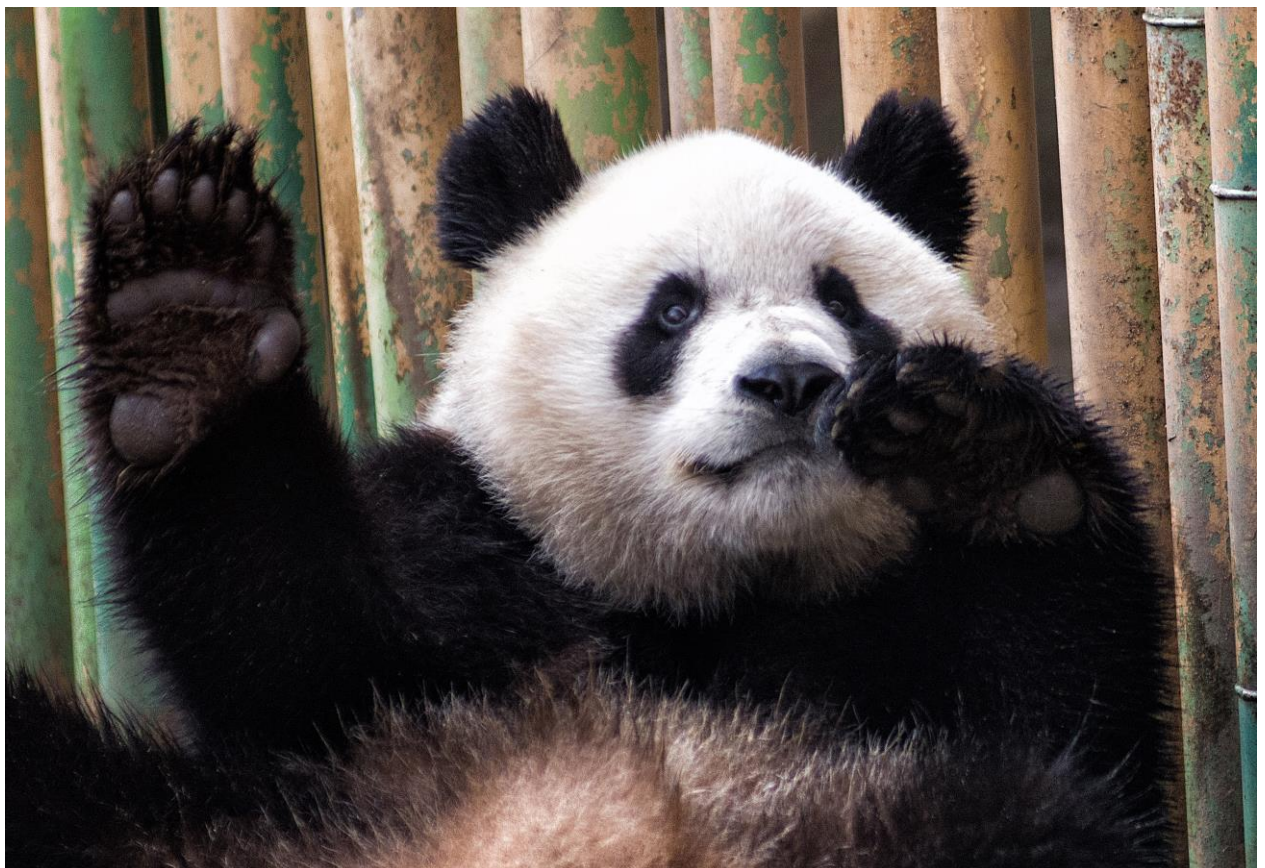
Look closely at the giant panda's hand on page 12.

You should have counted 6 fingers on the giant panda's skeleton. If you counted in Mandarin that would be:

yī èr sān sì wǔ liù  
一 二 三 四 五 六

Look at the picture below to see the 6 fingers. Although one of them is not a proper finger. Giant pandas have 5 straight fingers and an overgrown wrist bone that can bend to meet the fingers. This is how giant pandas are able to grip their bamboo.

Draw a circle around where you think the overgrown wrist bone is on the picture below.



Look closely at the picture on page 13.

This would be a great enclosure for a giant panda.

Try to work out from the picture the 6 important items that the giant panda needs.

chí táng

池塘

— — — —

shù

树

— — — —

dòng xué

洞穴

— — — —

shí tou

石头

— — — —

ǎi shù cóng

矮树丛

— — — —

zhú zi

竹子

— — — — — —

Look closely at the picture on pages 14 and 15.

This shows the life-cycle of the giant panda. Complete the following sentences using the words from the box below.

The \_\_\_\_\_ giant panda is pink and only about 15cm long.

After about 15 days, \_\_\_\_\_ and white markings appear.

When the baby is about one \_\_\_\_\_ old, it starts to look more like a giant panda.

The young giant panda learns from \_\_\_\_\_ and playing.

When the giant panda is about 18 months to 2 years old, it is time to leave \_\_\_\_\_

Adult giant pandas will start to have \_\_\_\_\_ when they are between 5 and 7 years old.

**mum   month   babies   newborn   black   climbing**



[beyondthepanda.org.uk](http://beyondthepanda.org.uk)

partnered with



SCILT Scotland's National Centre for Languages



西南交通大学  
Southwest Jiaotong University



育 SCEN  
SCOTLAND CHINA EDUCATION NETWORK

**Arnold Clark**