



Earball

In summer, the red squirrel can have large patches of white on its tail.



Tail

The grey squirrel usually has a grey and white speckled tail.



Biadh

The red squirrel eats seeds, nuts, berries, bark, acorns and fungi. They may also eat invertebrates and birds' eggs.



Food

The grey squirrel eats seeds, nuts, berries, bark acorns, invertebrates and birds' eggs.



Cluasan

The red squirrel usually has ear tufts.



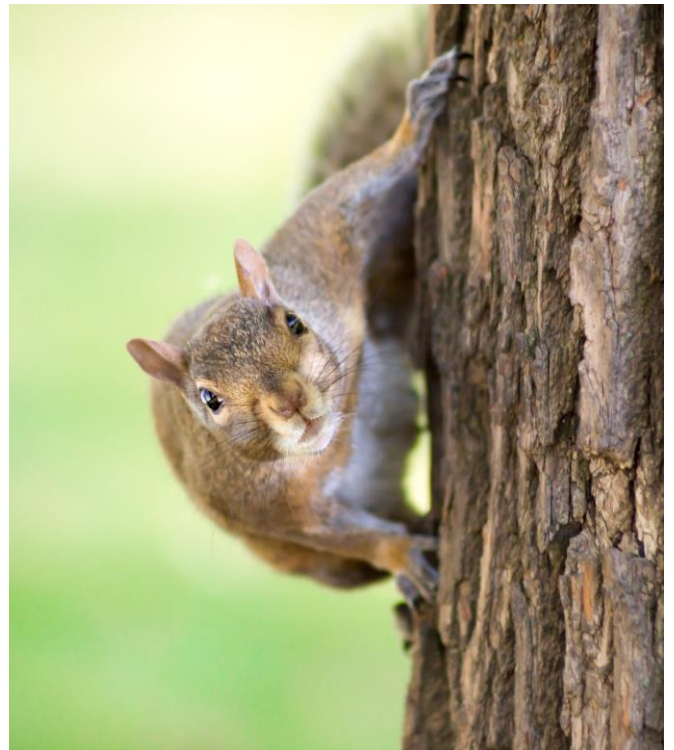
Ears

The grey squirrel has no ear tufts and rounded ears.



Bagairt

The squirrel pox virus often kills the red squirrel.



Threat

The grey squirrels are immune to the squirrel pox virus and are carriers of the disease.



Dath

The red squirrel is usually a reddish brown but can be darker and sometimes almost black.



Colour

The grey squirrel is usually grey but can have patches of reddish brown.



Meud

The red squirrel is smaller, slimmer and lighter than the grey. [HB:18-24cm ; T:14-20cm; W:250-300g]



Size

The grey squirrel is larger than the red. [HB:24-28cm; T:19-24cm; W:400-600g]