

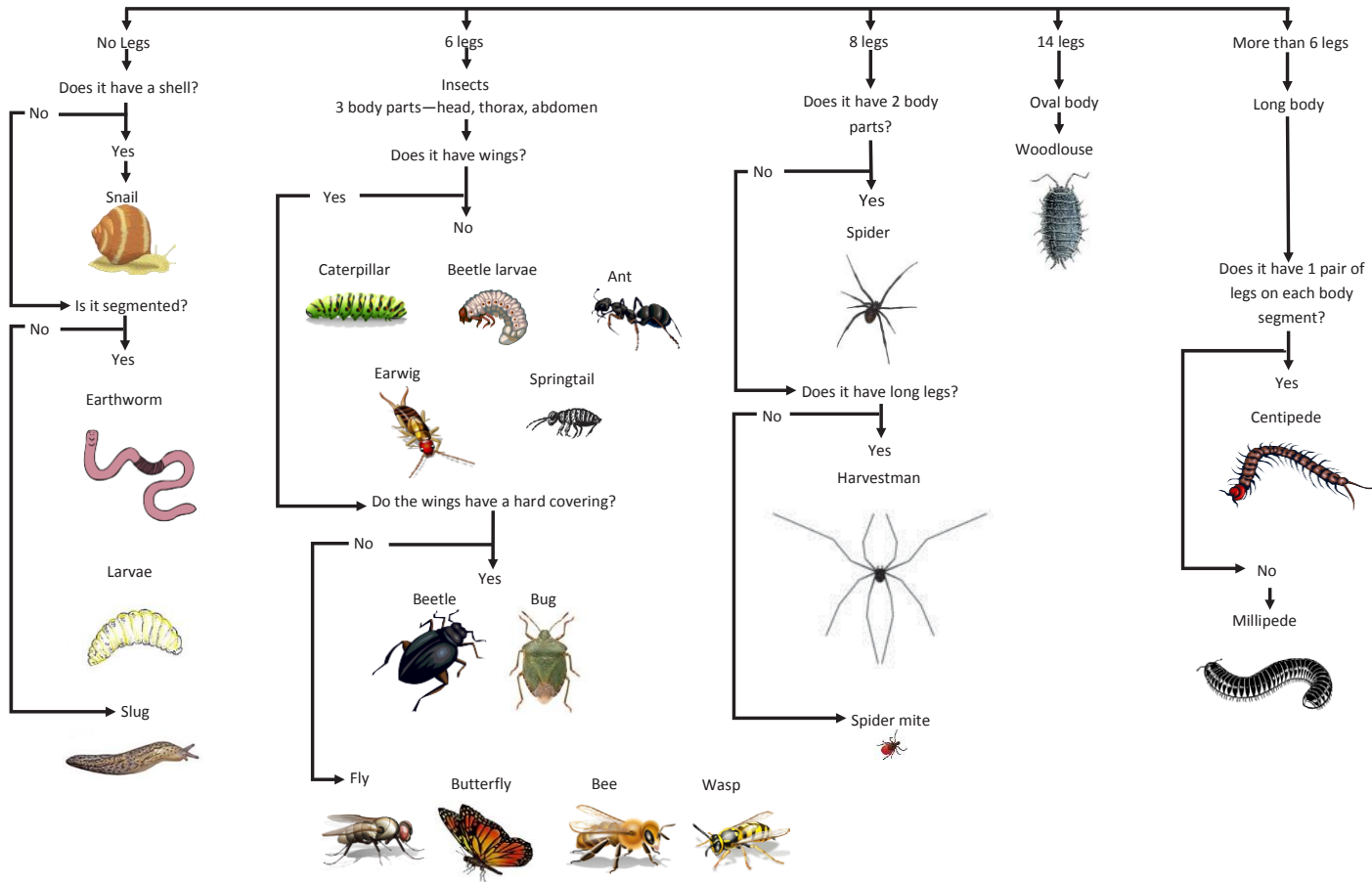


Wild about Scotland

Mini-Beasts

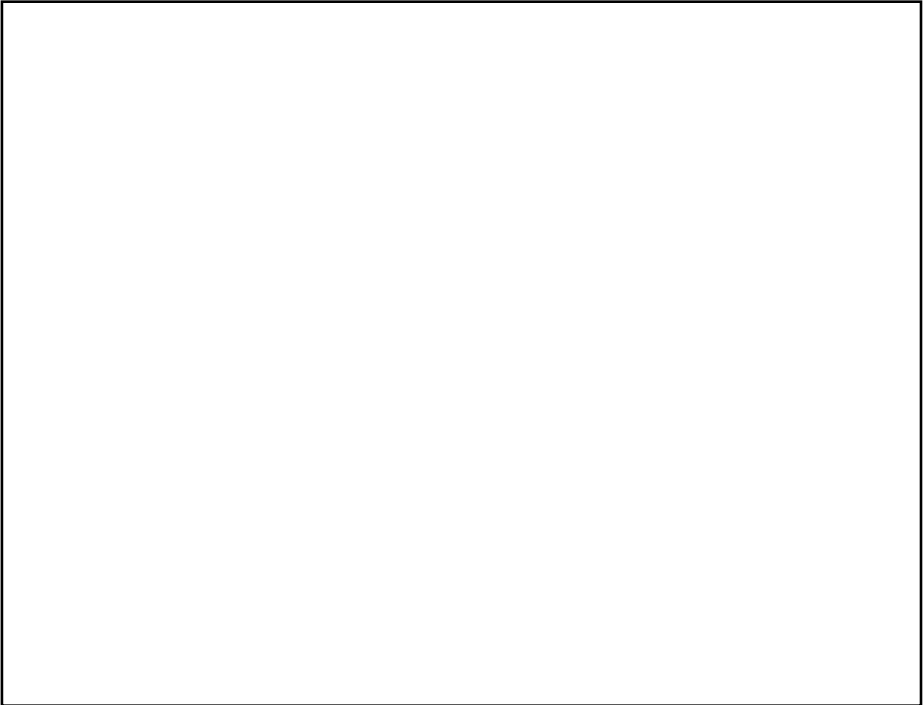


Name:



What did you find?

Draw a picture of your favourite mini-beast that you have found today:



Describe what your mini-beast looks like:

Write down an interesting fact about your favourite mini-beast:

Useful mini-beast words

Abdomen— The end segment of an insect's body.

Ecosystem— All the living & non-living things in a given place and the way they all work together.

Food chain— This shows how living things get their food and who eats who. It also shows the flow of energy between them.

Habitat— A place where plants and animals live; their home.

Identify— To look at something very closely and work out what kind of plant or animal it is.

Key— A special step-by-step guide to help you work out (identify) what you are looking at.

Larvae— The babies/young of insects.

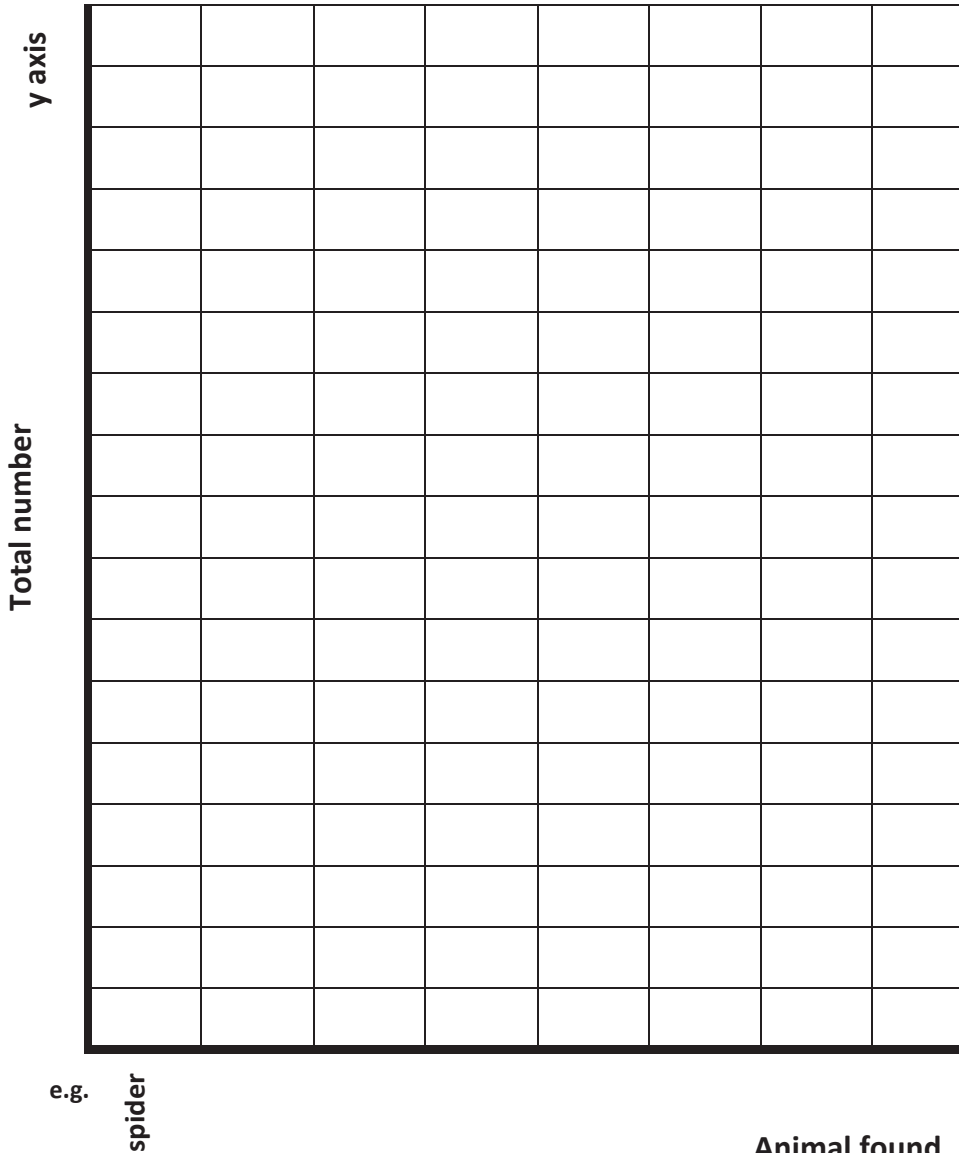
Segments— The parts that an insect body is divided into.

Survey— To look carefully at a small area and find out which plants and animals are found there.

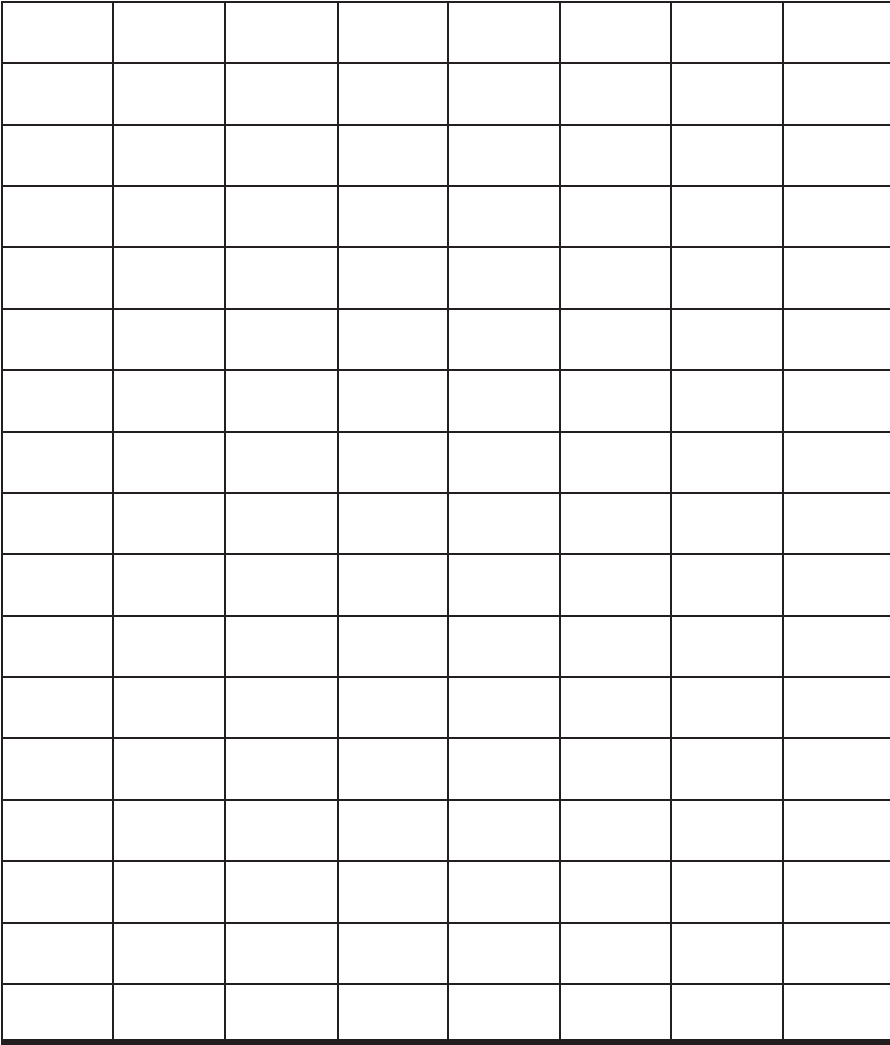
Thorax— The middle segment of an insect (where the wings/ legs are attached).

How many did you find?

Using the graph below, show how many of each animal you found as a whole class:



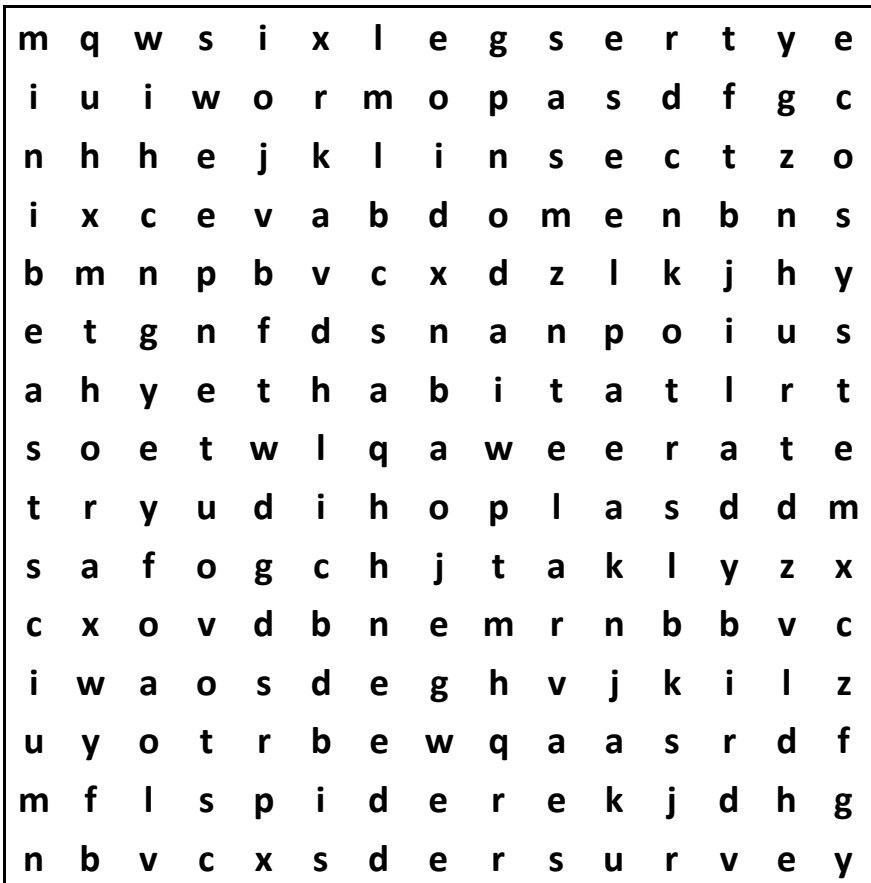
It is important to know how many animals are in a habitat and graphs are an easy way to show that. When working in science we want to have as many results as possible to get a better understanding of our surroundings.



x axis

Just for fun

All the words below are about mini-beasts and the words you have learnt today.



abdomen

larvae

mini-beasts

worm

six legs

spider

beetle

insect

thorax

food chain

habitat

ladybird

survey

woodland

ecosystem

sweep net