



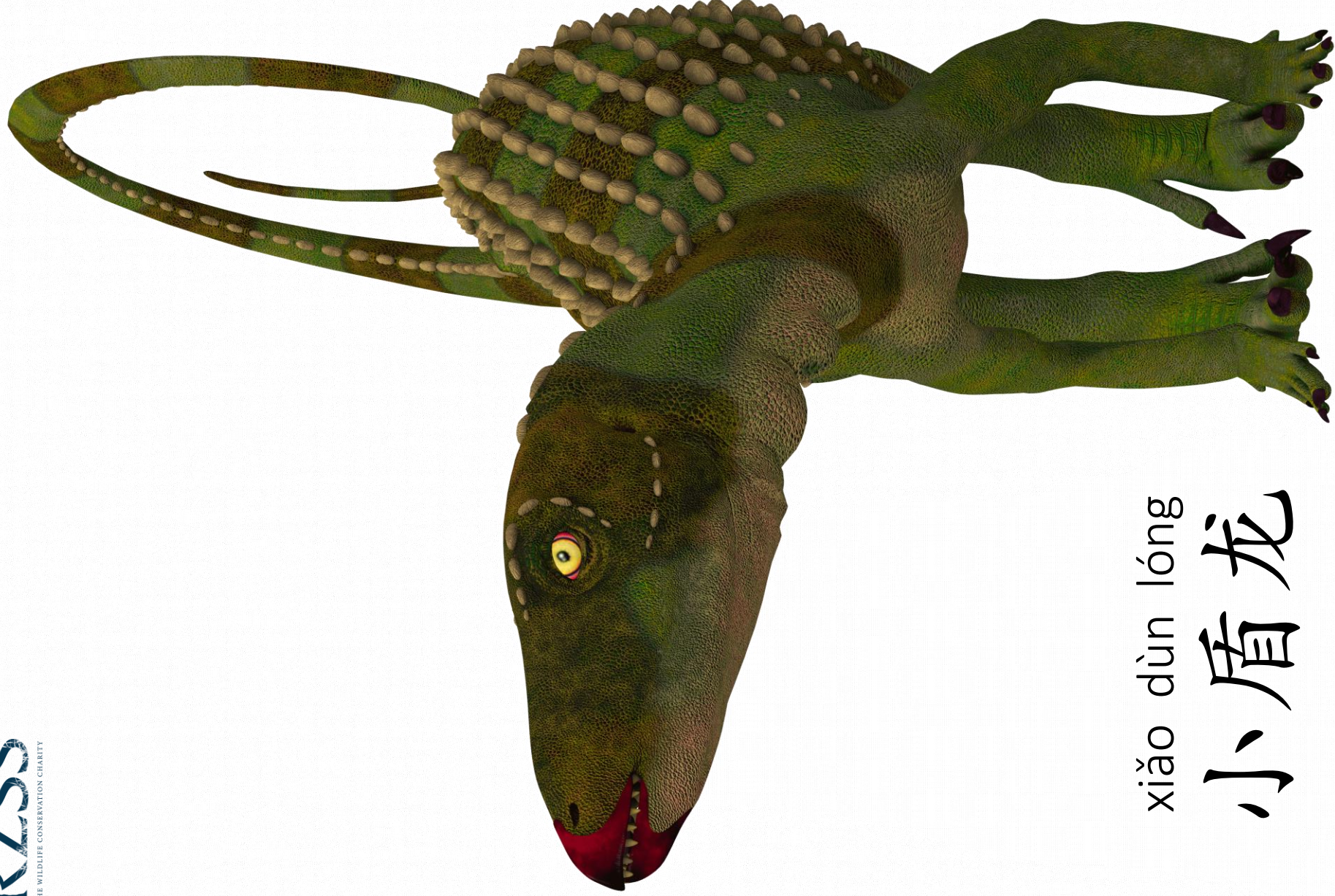
xū gǔ lóng
虚骨龙



yì chǐ lóng
异齿龙



yì lóng
翼龙



xiǎo dùn lóng

小盾龙



dì zhèn lóng

地震龙



jiàn lóng

剑龙



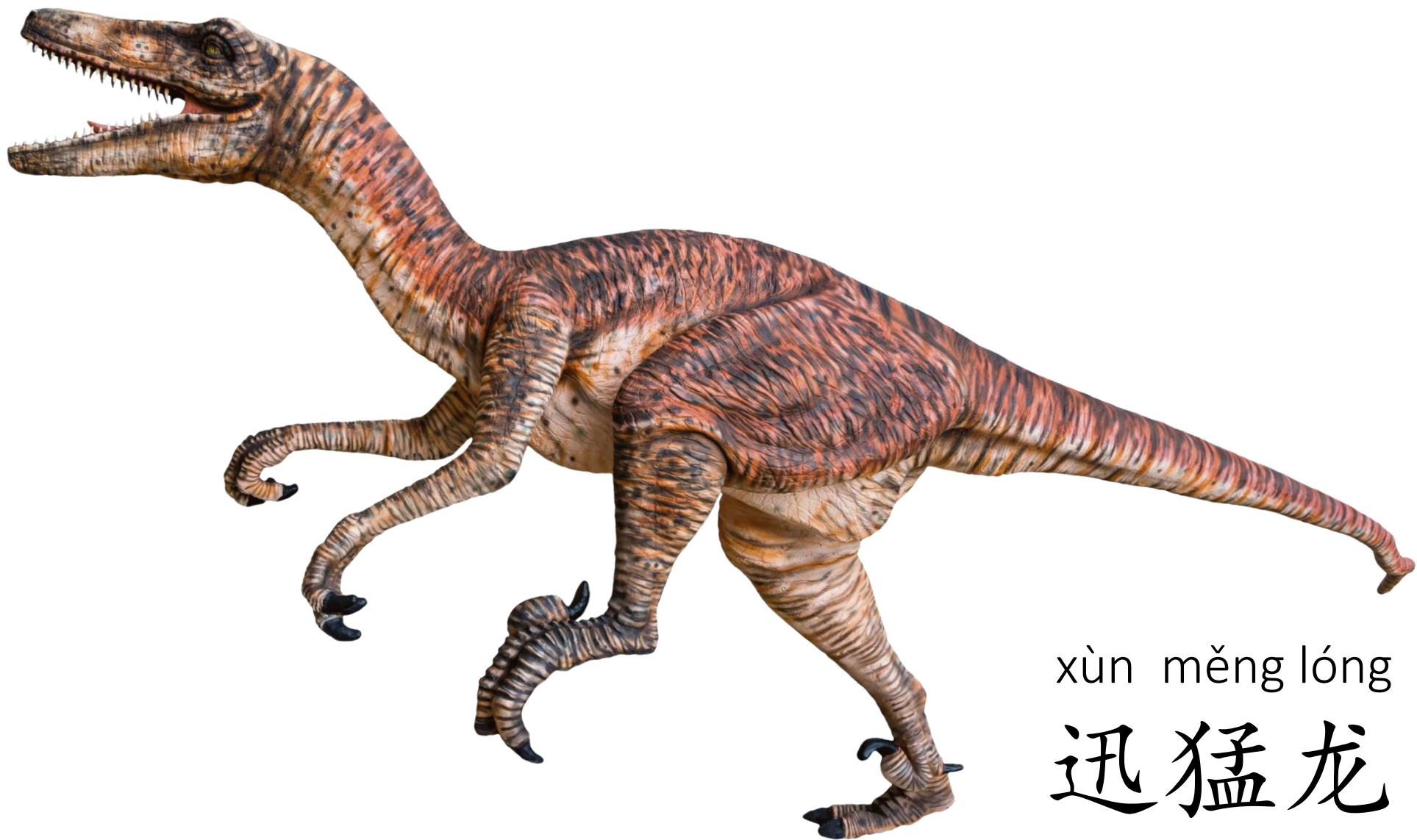
cháng jǐng lóng

长颈龙



bà wáng lóng

霸王龙



xùn měng lóng

迅猛龙